



Woodhill Crescent, , Harrow, HA3 0LZ

- Nine spacious bedrooms
- Three reception rooms
- 1930s/1950s charm
- Close to schools
- Ample living space
- Four modern bathrooms
- Detached house
- Located in Harrow
- Near transport links
- Viewing recommended

Asking Price £1,350,000



Woodhill Crescent, , Harrow, HA3 0LZ

DESCRIPTION

Nestled in the desirable Woodhill Crescent area of Harrow, this impressive detached house combines generous living space with family-friendly comfort, making it an ideal home for modern family life. With origins dating from the 1930s and 1950s, the property blends period charm with contemporary conveniences.

The accommodation includes three spacious reception rooms, each offering a versatile space for entertaining, relaxing or family gatherings. The home also features seven generously sized bedrooms and four well-appointed bathrooms, providing ample space and convenience for busy households.

Externally, the property benefits from parking for up to three vehicles and a private garden. The location offers a strong community feel, with easy access to local amenities, highly regarded schools and excellent transport links.

This exceptional detached house on Woodhill Crescent represents a rare opportunity to acquire a substantial family home in a sought-after location. Early viewing is highly recommended.







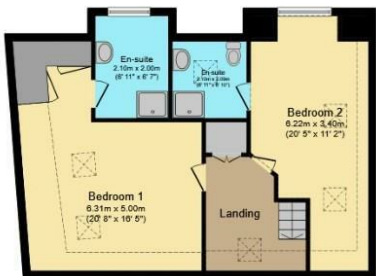
Ground Floor

Floor area 146.4 sq.m. (1,576 sq.ft.)



First Floor

Floor area 102.7 sq.m. (1,106 sq.ft.)



Second Floor

Floor area 67.1 sq.m. (723 sq.ft.)

Total floor area: 316.2 sq.m. (3,404 sq.ft.)

This floor plan is for illustrative purposes only. It is not drawn to scale. Any measurements, floor areas (including any total floor area), openings and orientations are approximate. No details are guaranteed, they cannot be relied upon for any purpose and do not form any part of any agreement. No liability is taken for any error, omission or misstatement. A party must rely upon its own inspection(s). Powered by www.Propertybox.io

Viewings

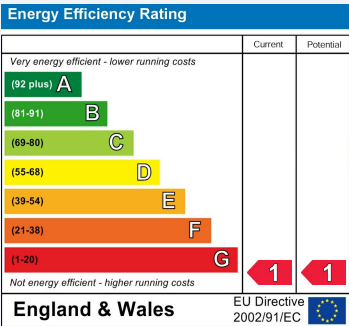
Please contact stanmore@hunters.com, if you wish to arrange a viewing appointment for this property or require further information.

Valuations

For a valuation of your property, please email the team with your property details, contact information and the times you are available.

ENERGY PERFORMANCE CERTIFICATE

The energy efficiency rating is a measure of the overall efficacy of a home. The higher the rating the more energy efficient the home is and the lower the fuel bills will be.



These particulars are intended to give a fair and reliable description of the property but no responsibility for any inaccuracy or error can be accepted and do not constitute an offer or contract. We have not tested any services or appliances (including central heating if fitted) referred to in these particulars and the purchasers are advised to satisfy themselves as to the working order and condition. If a property is unoccupied at any time there may be reconnection charges for any switched off/disconnected or drained services or appliances - All measurements are approximate.

THINKING OF SELLING? If you are thinking of selling your home or just curious to discover the value of your property, Hunters would be pleased to provide free, no obligation sales and marketing advice. Even if your home is outside the area covered by our local offices we can arrange a Market Appraisal through our national network of Hunters estate agents.

